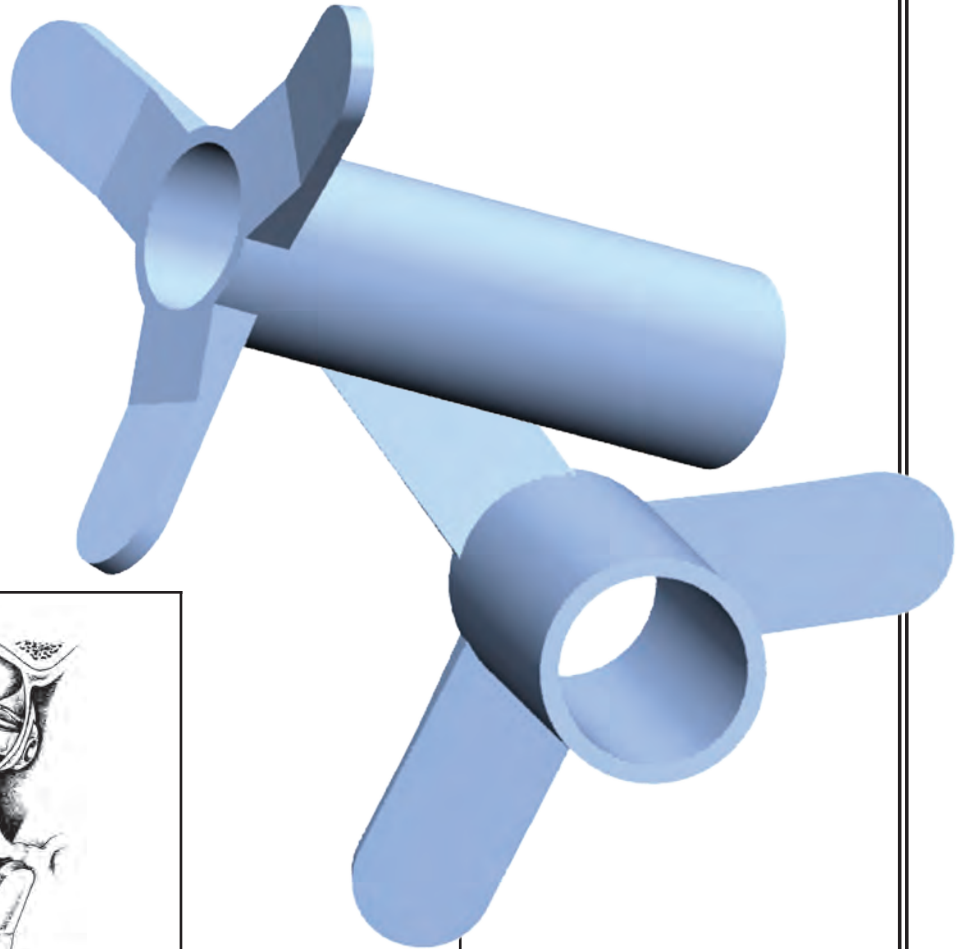


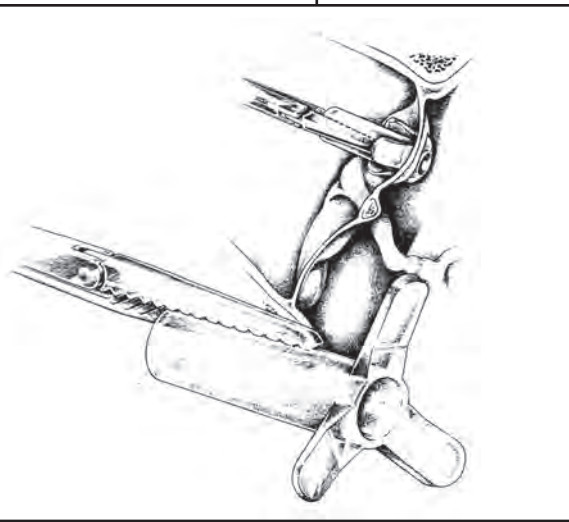
Triune Tube*

Ever Seen A Tube Like This?

*Patent Pending



Insertion Technique ▼



Maybe You're Missing Something!

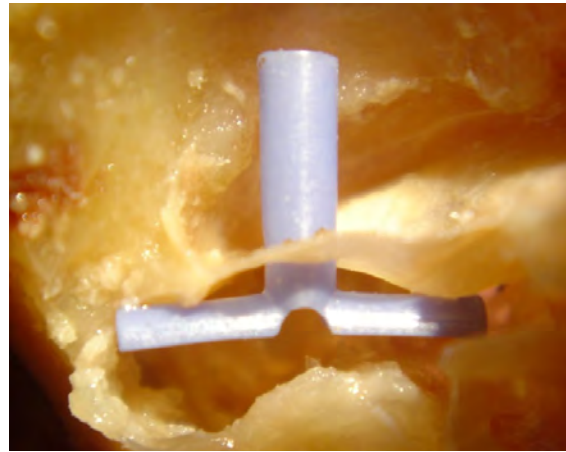
- Soft Angled Flanges Contour To The TM
- Three Flanges Hold Tube Perpendicular To TM
- Easy Insertion With Standard Forceps
- Reduced Trauma To TM¹
- 30 Month Mean Intubation²
- Also Available With PC Coating



*Designed in conjunction with Frank Hill, MD, Columbia, SC

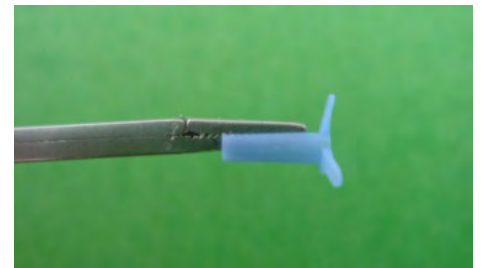


Triune Tube

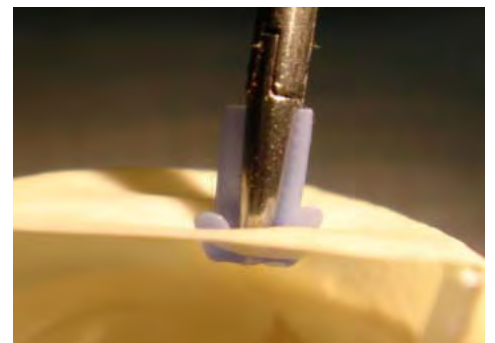


T-Tube

- 1589 inserted from March 04 to March 06; 1158 tubes seen in follow-up with an average extrusion at 30 months.²
- Mean follow-up of 12.4 months, over 400 patients followed over two years.²
- Perforation rate is 2.2% compared to 4.8% in over 20,000 tubes, (2.2% in short term tubes and 16.6% in long term tubes).³
- 2.8% Triune granulomas versus 2.8% in 2200 tubes.³
- 32.3% otorrhea rate versus 33% in over 2100 long term tubes. (.2% Triunes removed for otorrhea versus 4% of over 6500 tubes)³



Insertion



| Ref. # | Material | Lumen | Pkg. |
|----------|-------------|--------|-------|
| 510-121 | Silicone | 1.35mm | 5/Bx |
| 510-121C | PC Silicone | 1.35mm | 10/Bx |
| 510-122 | Silicone | 1.35mm | 5/Bx |

- 1 The Triune, a New Silicone Tympanoplasty Tube, Frank Hill, MD Otolaryngology-Head and Neck Surgery (2006) 134, 524-525
- 2 2007 AAO Poster Presentation, Dr. Frank Hill
- 3 Kay DJ, Nelson MT, Rosenfeld RM. Meta-analysis of tympanostomy tube sequelae. *Otolaryngology Head Neck Surgery* 1999; 124:374-380.