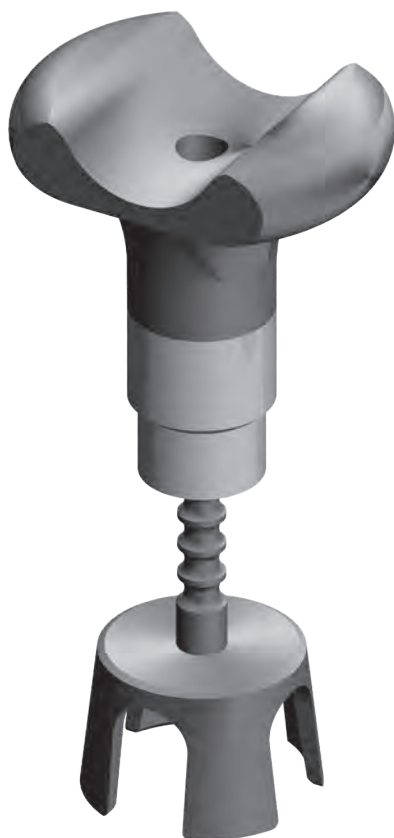


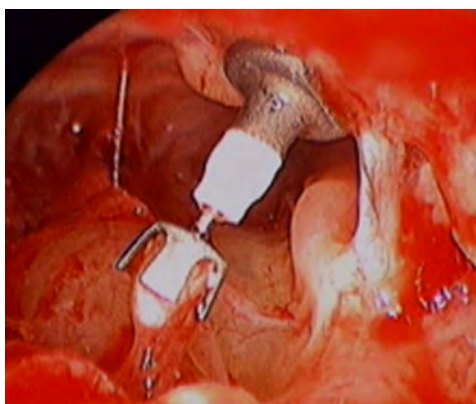
# Wedge Incus Strut

Specialized...Became More Special



- Provides a stable fit at both the stapes and malleus
- Eliminates need to harvest cartilage for interface with the TM
- Features a low profile titanium head to support the malleus
- Low profile design ensures minimum, if any, contact with the drum
- Available in two adjustable size ranges without the need to trim
- Lighter than traditional strut-type prostheses

▼ 3 and 6mm engraved numerals for quick reference



Part #	Material	Adjustable Length
657	Titanium	1.75mm to 2.25mm
656	Titanium	2.25mm to 3.50mm

  
**Grace Medical**  
AN ENTEROPTYX™ COMPANY

\*Designed in conjunction with Cliff Megerian, MD, Cleveland, OH,  
Joseph Chen, MD, Toronto, Ontario, Canada and Dennis Bojrab, MD, Detroit, MI