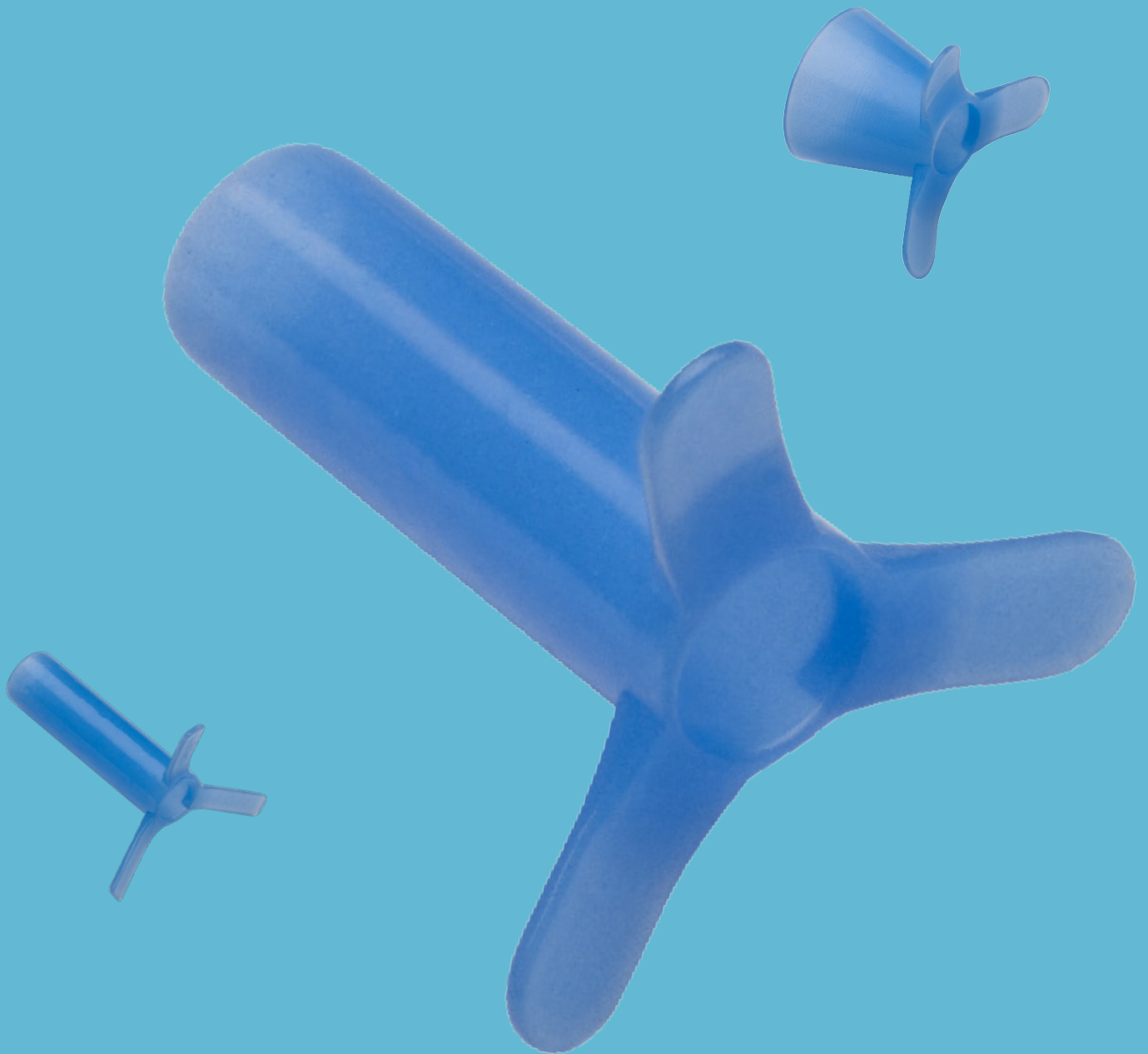


Triune Tube



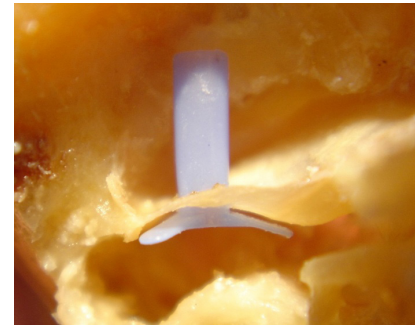
Grace Medical We Listen.

Triune Tube

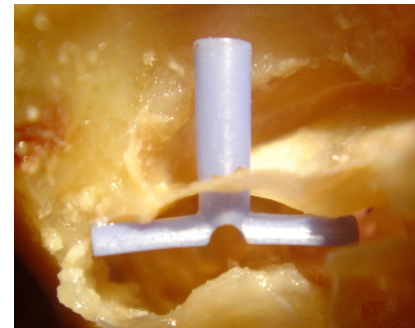
- 3.0%² perforation rate compared to 16.6% in long term tubes³
- Three angled flanges hold tube perpendicular to TM
- Reduced trauma to TM¹
- Soft angled flanges contour to the TM
- Easy insertion with standard forceps
- Produces fewer perforations than the T-tube while allowing a longer period of ventilation than grommet tubes⁴

REF. #	MATERIAL	LUMEN	PKG.
510-121	Silicone	1.35mm	5/bx
510-121C	Silicone (PC)	1.35mm	5/bx
510-122	Silicone	1.35mm	10/bx
510-123	Silicone	1.35mm	30/bx

*Designed in conjunction with Frank Hill, MD, Columbia, SC



Triune Tube

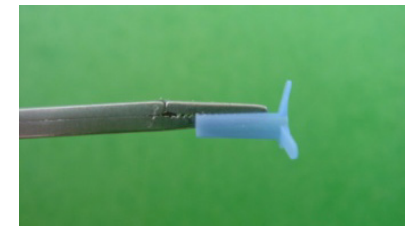


T-Tube

Tiny Triune Tube

REF. #	MATERIAL	LUMEN	PKG.
510-251	Silicone	0.76mm	5/bx
510-251C	Silicone (PC)	0.76mm	5/bx
510-252	Silicone	0.76mm	10/bx

*Design suggested by Dennis Bojrab, MD, Farmington Hills, MI



Insertion

Triune Trumpet Tube

REF. #	MATERIAL	LUMEN	PKG.
510-301	Silicone	1.27mm	5/bx
510-302	Silicone	1.27mm	10/bx



©2018 Grace Medical, Inc. All Rights Reserved.

- 1 The Triune, a New Silicone Tympanoplasty Tube, Frank Hill, MD, Otolaryngology-Head and Neck Surgery (2006) 134, 524-525.
- 2 Updated data from 2007 AAO Poster Presentation, Dr. Frank Hill.
- 3 Kay DJ, Nelson MT, Rosenfeld RM. Meta-analysis of tympanostomy tube sequelae. Otolaryngology Head Neck Surgery 1999; 124:374-380.
- 4 How Much Does the Type of Tympanostomy Tube Matter? A Utility-Based Markov Decision Analysis, Otolaryngology- Head and Neck Surgery 2015, Vol. 152(6) 1000-1006.

LIT0056 CID6021 Rev. 2018-09